



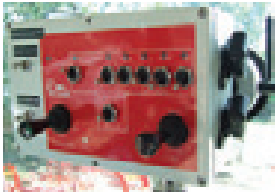
# CUSTOM 7ELUX

*British designed* and built for British farmers



# CUSTOM 7ELUX

Standard features

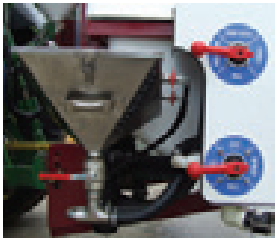


## Controls

**In-cab electric spray controls** operated electronically from one control box mounted in the cab.



**Hydraulic spray functions** are mounted at the rear and protected by moulded cover.



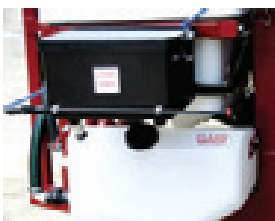
**Work station** controlling primary functions to operate the sprayer and when cleaning or filling.



**Chemical induction:** 25L stainless steel hopper for safe transfer of liquids and powders via a high pressure venturi system to the main tank, a rotary nozzle for cleaning containers.



**Diaphragm pump:** High quality poly' diaphragm pump withstands any aggressive plant protection chemicals.



**Clothes storage:** 25L clothing and PPE locker.



**Clean water supply:** 100L for tank rinsing and boom flushing.

**Hand wash:** 15L clean water supply.

## Booms

### Boom construction:

All booms are manufactured from steel tubular sections. The three dimensional structure guarantees strength and durability.

All nozzles and spray lines are secured above the base of the boom for protection against accidental damage.

### Boom adjustment:

All pivot points and fold rams can be adjusted to counteract wear.

**Hose & Cable Guide** tidies and protects hoses and cables.

### Boom stowage system

secures boom assembly in the folded position for safe road transport.

### Break back:

All booms are fitted with break back pivot points to protect against unforeseen obstacles.

### Boom flexibility:

It is possible to work with the boom part-folded:

- 18 to 9m
- 20 to 11m
- 21 to 11m
- 24 to 12m



# CUSTOM 7ELUX

Optional extras



#### Tank options:

1000L

1200L

1400L



**Computerised spray rate controller** automatically adjusts spray application rate to forward speed.

#### Front tank:

##### 600 - 1500L tank options

600L capacity; hydraulically driven transfer pump (700LPM). Incab electric transfer controls. Bull-bar complete with road lighting; 3 point linkage frame.



#### Triple nozzle assemblies

enable the operator to select from a choice of 3 nozzle sizes for various applications.



#### Variable boom geometry

enables the operator to individually lift either side of the boom to match contoured land (see below).

#### Other optional extras

Air shut-off and liquid recirculation, stainless steel spray lines, bout/foam marker, one-side boom fold (*outer section only*), retractable hose reel for cleaning.





# CUSTOM DELUX

## Technical specifications

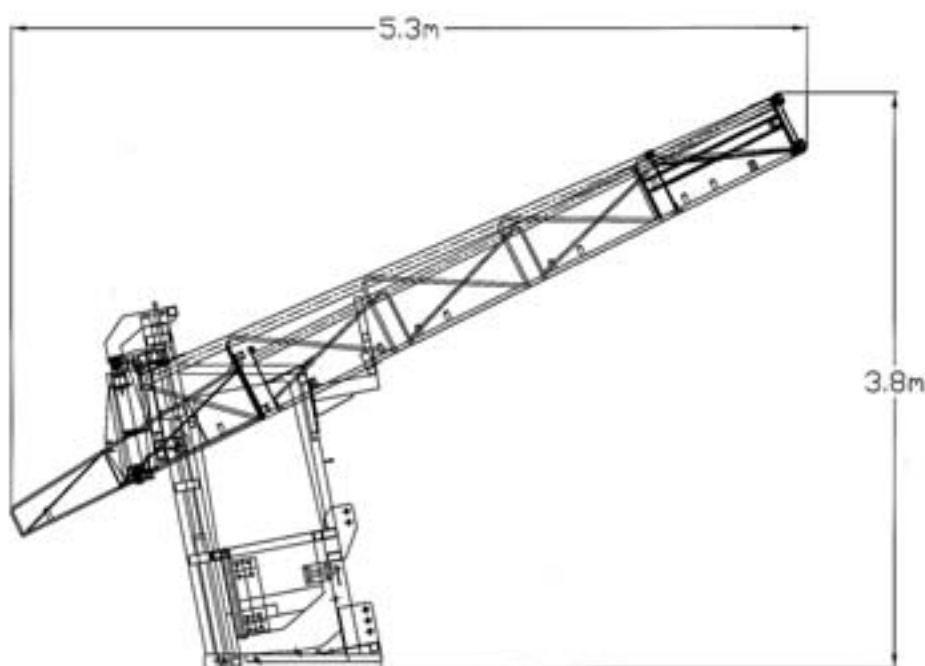
Item	Dimension
Tank capacities (L)	1000, 1200, 1400
Pumps (type / L per min)	Poly 2180 / 180; Poly 2250 / 250
Boom lengths (m)	18, 20, 21, 24
Hydraulic outlet required	one single acting and two double acting valves (standard machine)
Weight (Kg)	1200
Total height (m)	3.8 (24m model)
Total width (m)	2.7 (24m model)
Rinse tank (L)	100

### Notes:

The Custom Delux is available with a range of booms from 18 to 24m.

All booms have pendulum system and anti-yaw damping.

The Custom Delux chassis and boom have been designed to meet the rigorous demands of any farming environment, the reclined chassis design avoids the need for front stabilisation and when lifted, a vertical position is achieved without any adjustment.



### Team Sprayers Limited

Unit 3 Lancaster Way Business Park  
Witchford, Ely, Cambs CB6 3NW  
Tel: 01353 661 211 Fax: 01353 666 642  
Email: [sales@team-sprayers.com](mailto:sales@team-sprayers.com)  
[www.teamsprayers.com](http://www.teamsprayers.com)



*Leaders in the field of application*